

PREVENTING CHRONIC DISEASE

PUBLIC HEALTH RESEARCH, PRACTICE, AND POLICY

**Multicomponent Approach to Advancing
Diversity, Equity, and Inclusion to Reduce
Health Disparities, Advance Health
Equity, and Improve Population Health**

Leonard Jack, Jr, PhD, MSc

Editor in Chief

*Preventing Chronic Disease: Public Health Research,
Practice, and Policy*

Centers for Disease Control and Prevention



PCD's Quick Stats

- ❑ **Founded in 2004 by NCCDPHP**
- ❑ **Manuscripts submitted through online processing system**
- ❑ **All papers reviewed by EIC for timeliness, fit, relevance**
- ❑ **40% of submissions selected for external review**
- ❑ **21.35% acceptance rate**
- ❑ **After acceptance, papers are edited by PCD and proofs are sent to authors**
- ❑ **5-8 special issue collections published annually**
- ❑ **Mission and vision refined in 2018**

PCD's Mission, Vision, and Audience

Mission

PCD's mission is to promote dialogue among researchers, practitioners, and policy makers worldwide on the integration and application of research findings and practical experience to address health disparities, advance health equity, and improve population health.

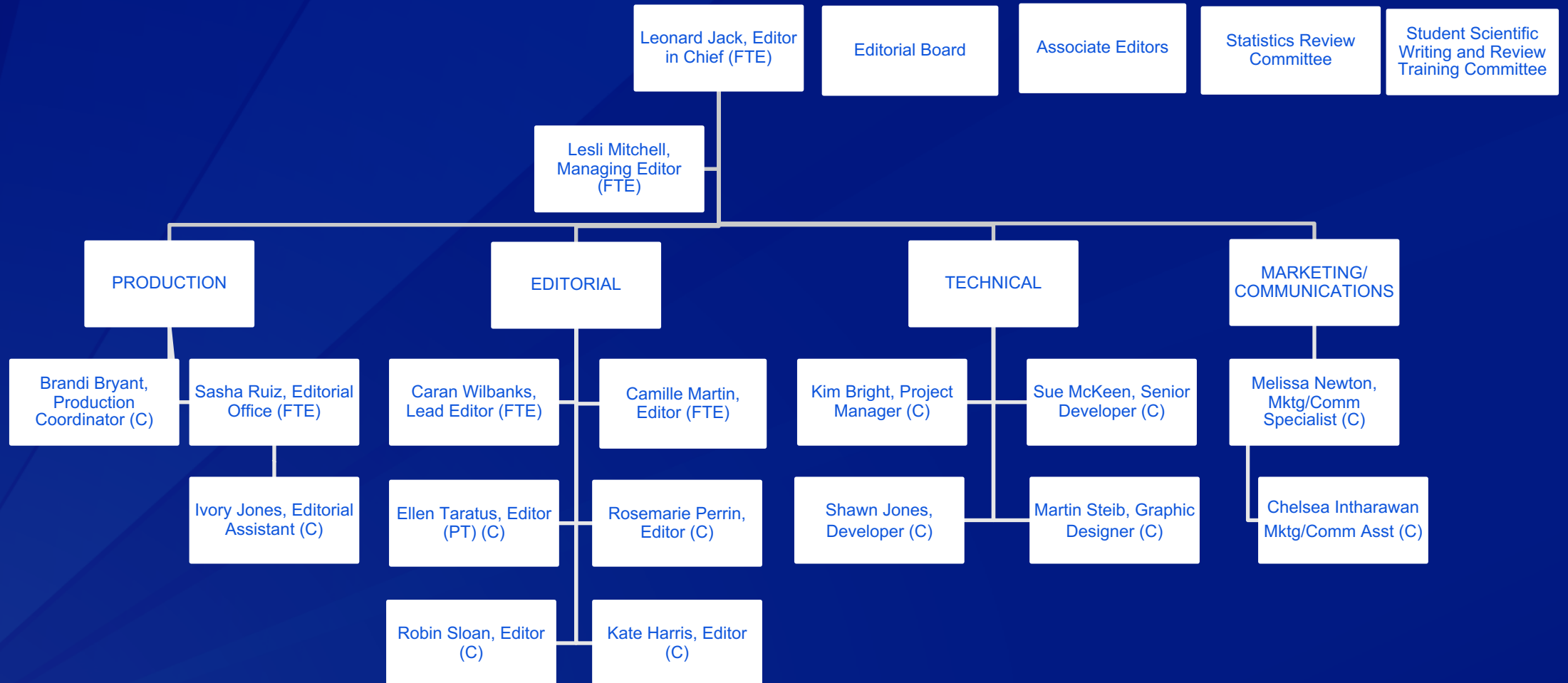
Vision

PCD's vision is to serve as an influential journal in the dissemination of proven and promising peer-reviewed public health findings, innovations, and practices with editorial content respected for its integrity and relevance to chronic disease prevention.

Audience

- ❑ Medical and healthcare professionals.
- ❑ Researchers and evaluators.
- ❑ Policy makers.
- ❑ Public health practitioners.

DEI in PCD's Day-to-Day Operations



PCD Editor in Chief

- ❑ Serve as the lead scientific authority over all published content**
- ❑ Disseminate content that does not contribute to historical harms**
- ❑ Serve as a senior advisor to NCCDPHP and CDC**
- ❑ Collaborate with federal agencies, WHO, research institutions, etc**
- ❑ Assemble internal and external content experts—volunteer boards, peer reviewers, guest editors**
- ❑ Ensure content is trustworthy, rigorous, and aligns with the mission of DHHS and CDC**
- ❑ Create and maintain supportive and respectful work environment for PCD staff, volunteers, authors, reviewers**
- ❑ Integrate DEI best practices throughout all journal operations**

PCD External Review Expert Panel (2017-2018)

Hector Balcazar, PhD, MS (Chair)

Hector Balcazar is dean of the College of Science and Health at Charles R. Drew University of Medicine and Science. Hector specializes in the study of public health problems of Latinos/Mexican Americans. He has conducted numerous studies of Latino birth outcomes, acculturation and health-related behaviors, cardiovascular disease prevention programs in Latinos, and border health issues. He served as an editorial board member for several journals, and served as chair of the editorial board of the *American Journal of Public Health*.

Ana F. Abraido-Lanza, PhD (Co-Chair)

Ana Abraido-Lanza is professor of sociomedicine and director of the doctor of public health program at the Mailman School of Public Health at Columbia University. In addition, Ana serves as the director of the Initiative for Minority Student Development. Ana's research focuses on cultural, psychological, and socioeconomic processes that affect psychological well-being, adjustment to chronic illness, and mortality among Latinos. Ana is an associate editor at the journal *Health Education and Behavior* and a member of the editorial board at the *Annals of Behavioral Medicine*.

Collins O. Airhihenbuwa, PhD, MPH

Collins Airhihenbuwa is former professor and dean of the College for Public Health and Social Justice at Saint Louis University (SLU). He was also the director of the Global Health Institute at SLU. Collins is an internationally recognized expert on behavioral health and a pioneer in centralizing culture in health behaviors. Collins has served on editorial boards for several peer-reviewed journals: *American Journal of Health Behavior*; *AIDS Education and Prevention*; *Health Education and Behavior*; *Journal of Health Communication*; and *Journal of Medical Anthropology*.

Melissa Grim, PhD

Melissa Grim serves as chair and professor at Radford University in the Department of Health and Human Performance. Melissa's expertise and interests include planning and evaluating public health interventions to increase physical activity and investigating differences in health behavior in urban, rural, and suburban settings. Melissa currently serves as the deputy editor for *Health Promotion Practice*, a journal dedicated to linking research and practice.

Shiriki Kumanyika, PhD, MPH

Shiriki Kumanyika is a research professor in the Dornsife School of Public Health at Drexel University. Shiriki retains an appointment as an emeritus professor of epidemiology at the University of Pennsylvania. She was vice-chair of the US Department of Health and Human Services' Secretary's Advisory Committee on Healthy People 2020 objectives, is a past president of the American Public Health Association, and is a member of the National Academy of Medicine (formerly known as the Institute of Medicine). Shiriki is currently a member of the CDC Task Force on Community Preventive Services, co-chair of the Policy and Prevention Section of the World Obesity Federation, and a member of the Lancet Commission on Obesity.

William L. Lanier Jr, MD

William L. Lanier is professor of anesthesiology at the Mayo Clinic. His research interests involve neurosurgical anesthesiology and ischemic brain disease, and he has been engaged in both laboratory and clinical research. He was a founding section editor of *Journal of Neurosurgical Anesthesiology* and founding editorial board member for *Disaster Medicine and Public Health Preparedness*. William served as a faculty member for the Council of Science Editors (CSE) for its 2-day Short Course for Editors and director of the CSE's Short Course. He served as editor in chief of *Mayo Clinic Proceedings*, the world's third-largest circulation scholarly medical journal. He is emeritus editor in chief of *Mayo Clinic Proceedings*.

Sarah Patrick, PhD, MPH

Sarah Patrick is director of the Jackson County (Illinois) Department of Health. She directs and manages 3 major divisions of the Department of Public Health. These are Communicable Disease Control, Health Promotion and Public Health Research, and Environmental Health. Sarah has extensive experience developing and supporting collaborative public health practice partnerships between local health departments, academic institutions, and hospital systems. In 2015, she served on a project led by the Council of State and Territorial Epidemiologists to identify scientific writing needs among applied epidemiologists.

PCD External Review Panel

June 16, 2017



Hector Balcazar, PhD, MS (Chair)

Hector Balcazar is Dean of the College of Science and Health at Charles R. Drew University of Medicine and Science. Hector specializes in the study of public health problems of Latinos/Mexican Americans. He has conducted numerous studies of Latino birth outcomes, acculturation and health related behaviors, cardiovascular disease prevention programs in Latinos, and border health issues. He served as an editorial board member for several journals, and served as Chair of the Editorial Board of the *American Journal of Public Health*.



Ana F. Abraido-Lanza, PhD, MA (Co-Chair)

Ann Abraido-Lanza is Professor of Sociomedicine and Director of the DrPH Program at the Mailman School of Public Health at Columbia University. In addition, Ana serves as the Director of the Initiative for Minority Student Development. Ana's research focuses on cultural, psychological, and socioeconomic processes that affect psychological well-being, adjustment to chronic illness, and mortality among Latinos. Ana is an Associate Editor with the journal *Health Education and Behavior* and a member of the Editorial Board with the *Annals of Behavioral Medicine*.



Collins O. Airhihenbuwa, PhD, MPH

Collins Airhihenbuwa is Professor and Dean of the College for Public Health and Social Justice at Saint Louis University (SLU). He is also the Director of the Global Health Institute at SLU. Collins is an internationally recognized expert on behavioral health and a pioneer in centralizing culture in health behaviors. Collins has served on editorial boards for several peer-reviewed journals: *American Journal of Health Behavior*; *AIDS Education and Prevention*; *Health Education and Behavior*; *Journal of Health Communication*; *Journal of Medical Anthropology*.

Questions

QUESTION #1: Is the journal's mission statement—to promote open exchange of information and knowledge among researchers, practitioners, policy makers, and others who strive to improve the health of the public through chronic disease prevention—clear, appropriate, and relevant?

QUESTION #2: Is the journal's scope relevant and beneficial? Should new topics or types of articles be considered?

QUESTION #3: Should the journal's audience—public health practitioners, researchers of chronic disease and health promotion, policy maker—be redefined?

QUESTION #4: Is PCD publishing high quality science? By what measures? Are any modifications needed?

Questions (cont.)

QUESTION #5: What should be the journal's highest priorities?

QUESTION #6: What is the journal doing well? What improvements should the journal consider?

QUESTION #7: Recognizing the rapidly changing environment of scholarly publishing—eg, evolving editorial standards and protocols, metrics and analytics, social media and outreach channels, multiple content delivery platforms and devices—what types of innovations should the journal pursue?

PCD's First-Ever External Review to Enhance the Journal's Worldwide Usefulness

EIC Column
April 5, 2018

PREVENTING CHRONIC DISEASE
PUBLIC HEALTH RESEARCH, PRACTICE, AND POLICY

Using PCD's First-Ever External Review to Enhance the Journal's Worldwide Usefulness to Researchers, Practitioners, and Policy Makers

[Print](#)

EDITOR IN CHIEF'S COLUMN — Volume 15 — April 5, 2018

Leonard Jack Jr, PhD, MSc

Suggested citation for this article: Jack L Jr. Using PCD's First-Ever External Review to Enhance the Journal's Worldwide Usefulness to Researchers, Practitioners, and Policy Makers. Prev Chronic Dis 2018;15:180133. DOI: <http://dx.doi.org/10.5888/pcd15.180133>



Leonard Jack Jr, PhD, MSc

Preventing Chronic Disease (PCD) was established in 2004 by the Centers for Disease Control and Prevention (CDC) to enhance the science base on effective public health approaches to prevent and control chronic disease. After 14 years of progress, *PCD* conducted its first-ever external review to identify ways for the journal to continue to enhance its usefulness for its audience of researchers, practitioners, and policy makers. In June 2017, *PCD* invited a panel of 7 nationally recognized experts in scientific publishing ([Appendix](#)) to respond to key questions about *PCD*'s mission, quality of scientific content, scope of operation, intended audience, and future direction.

The panel's overall assessment of *PCD* was that it is well-positioned to continue its trajectory of growth and success. In particular, the panel complimented the journal's leadership, innovation in scientific publishing, increase in national visibility, and superior customer service provided to its editorial board, associate editors, authors, readers, and peer reviewers. On the basis of the panel's recommendations and in consultation with the journal's editorial board, associate editors, and National Center for Chronic Disease Prevention and Health Promotion (NCCDPHP) leadership, I am pleased to share these enhancements to the journal.

On This Page

[Refining PCD's Vision and Mission Statement](#)

[Focusing on Topics Areas of Greatest Interest](#)

[Revisiting Article Types](#)

[Securing Scientific and Programmatic Expertise](#)

[Complementing Our Work on Epidemiological Studies With Increased Attention to Evaluating Population-Based Interventions and Policies](#)

[Providing Transparent Information on the Journal's Impact](#)

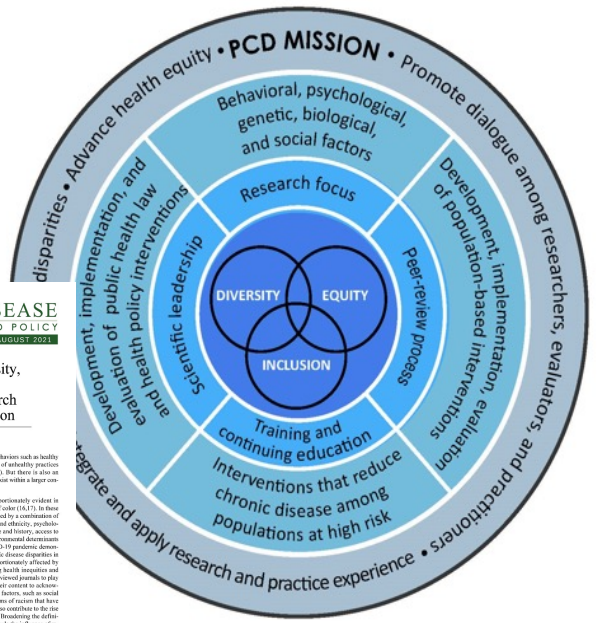
[Conclusion](#)

Jack L Jr. Using PCD's First-Ever External Review to Enhance the Journal's Worldwide Usefulness to Researchers, Practitioners, and Policy Makers. Prev Chronic Dis 2018;15:180133. DOI: <http://dx.doi.org/10.5888/pcd15.180133>[external icon](#)

PCD's Approach

- ❑ Apply DEI principles across all journal operations
- ❑ Advance DEI Activities through continued expansion in 4 areas:
 - Expand research, evaluation, and practice: Health is shaped by multiple factors across the life stage
 - Scientific leadership in Editorial Board, Associate Editors, Statistics Review Committee
 - Expand author and peer reviewer pool
 - Provide DEI training/continuing education for PCD staff, volunteers, peer reviewers, and authors

PCD's Multicomponent Approach to Advancing Diversity, Equity, and Inclusion to Reduce Health Disparities, Advance Health Equity, and Improve Population Health

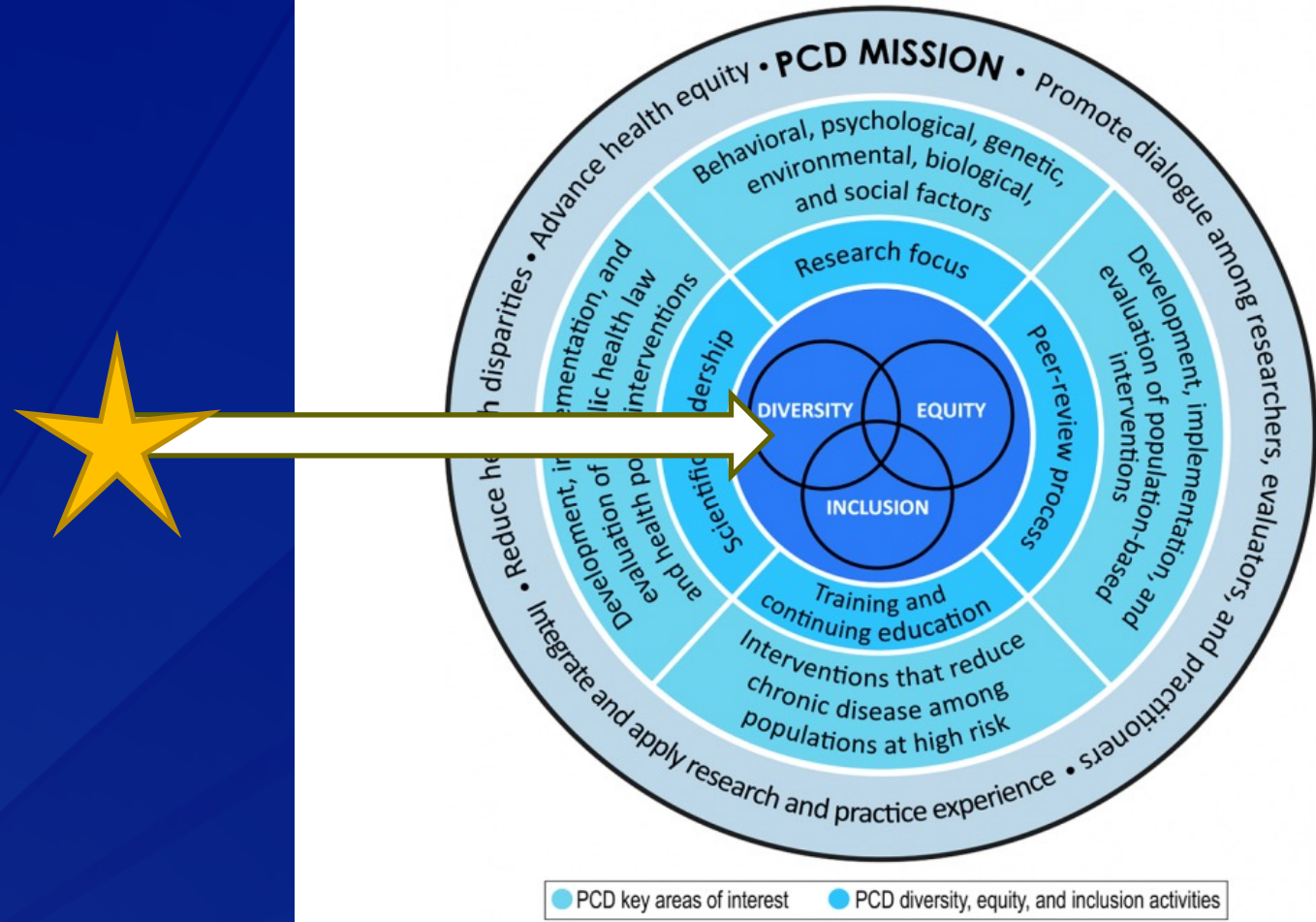


KEY AREAS OF INTEREST ● PCD DIVERSITY, EQUITY, AND INCLUSION ACTIVITIES



Jack L Jr. PCD's Commitment to Advancing Diversity, Equity, and Inclusion in Its Scientific Leadership, Peer-Review Process, Research Focus, Training, and Continuing Education. *Prev Chronic Dis* 2021;18:210269. DOI: <http://dx.doi.org/10.5888/pcd18.210269external icon>

PCD's Multicomponent Approach to Advancing Diversity, Equity, and Inclusion to Reduce Health Disparities, Advance Health Equity, and Improve Population Health

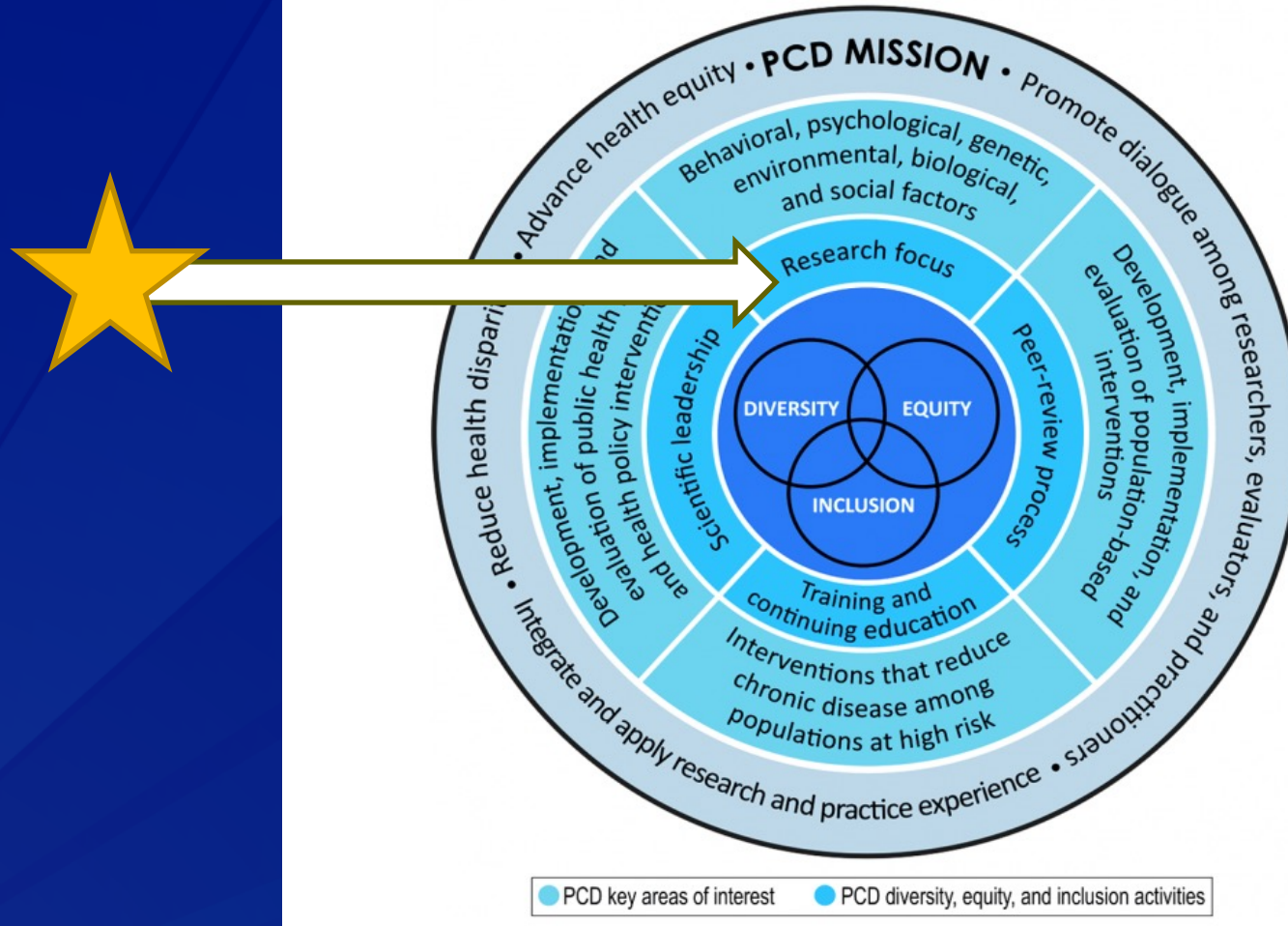


Jack L Jr. PCD's Commitment to Advancing Diversity, Equity, and Inclusion in Its Scientific Leadership, Peer-Review Process, Research Focus, Training, and Continuing Education. Prev Chronic Dis 2021;18:210269. DOI: <http://dx.doi.org/10.5888/pcd18.210269>

Interpersonal Skills Needed: Leonard's Perspective

- ❑ Communicating complex public health research to a variety of audiences
- ❑ Understanding scholarly publishing from a systems approach
- ❑ Navigating during periods of chaos
- ❑ Equitable gatekeeper for “All People”: Access to tools, people, resources, and information
- ❑ Learning from mistakes
- ❑ Effective conflict resolution and negotiation
- ❑ Cultural competency
- ❑ Acknowledging others and sharing successes
- ❑ Patience

PCD's Multicomponent Approach to Advancing Diversity, Equity, and Inclusion to Reduce Health Disparities, Advance Health Equity, and Improve Population Health



Jack L Jr. PCD's Commitment to Advancing Diversity, Equity, and Inclusion in Its Scientific Leadership, Peer-Review Process, Research Focus, Training, and Continuing Education. Prev Chronic Dis 2021;18:210269. DOI: <http://dx.doi.org/10.5888/pcd18.210269>

Major Public Health Achievements in the US

- ❑ **Motor Vehicle Safety**
- ❑ **Safer Workplaces**
- ❑ **Infectious Disease Control**
- ❑ **Safer and Healthier Foods**
- ❑ **Healthier Mothers and Babies**
- ❑ **Fluoridation of Drinking Water**
- ❑ **Improved Life Expectancy**

National Health Data Sources

Using Surveillance Systems to Prevent and Control Chronic Diseases



Source: National Center for Chronic Disease Prevention and Health Promotion [Chronic Diseases in America](#) | CDC.



Behavioral Risk Factor Surveillance System (BRFSS)

The Behavioral Risk Factor Surveillance System (BRFSS) is the world's largest, premier system of health-related telephone surveys that collect state data about U.S. residents regarding their health-related risk behaviors such as smoking, physical activity, and fruit and vegetable consumption; chronic health conditions; and use of preventive services.



Chronic Kidney Disease (CKD) Surveillance System

The CKD Surveillance System documents the burden of CKD and its risk factors in the US population over time and monitors the progress of efforts to prevent, detect, and manage CKD.

Health-Related Quality of Life HRQOL

Health-Related Quality of Life (HRQOL)

HRQOL surveillance is used to identify unmet population health needs; recognize trends, disparities, and determinants of health in the population; and guide decision making and program evaluation.



National Health Interview Survey

National Health Interview Survey (NHIS)

NHIS is a large-scale household interview survey that collects data on health status, health care access, and progress toward achieving national health objectives.



National Health and Nutrition Examination Survey (NHANES)

NHANES is designed to assess the health and nutritional status of adults and children in the United States. The survey is unique in that it combines interviews and physical exams.



United States Cancer Statistics

The United States Cancer Statistics are the official government statistics on cancer. These statistics include cancer registry data from CDC's National Program of Cancer Registries and the National Cancer Institute's Surveillance, Epidemiology, and End Results (SEER) Program, as well as mortality data from CDC's National Center for Health Statistics. The statistics provide information on newly diagnosed cancer cases and cancer

THE KEY LIFESTYLE RISKS FOR CHRONIC DISEASE



TOBACCO
USE



POOR
NUTRITION



LACK OF
PHYSICAL ACTIVITY



EXCESSIVE
ALCOHOL USE

CDC's National Center for Chronic Disease Prevention and Health Promotion (NCCDPHP)

CHRONIC DISEASES IN AMERICA

6 IN 10

Adults in the US
have a **chronic disease**



4 IN 10

Adults in the US
have **two or more**

THE LEADING CAUSES OF DEATH AND DISABILITY
and Leading Drivers of the Nation's **\$4.1 Trillion** in Annual Health Care Costs



HEART DISEASE



CANCER



CHRONIC LUNG
DISEASE



STROKE



ALZHEIMER'S
DISEASE



DIABETES



CHRONIC
KIDNEY DISEASE

Where People Live, Learn, Work, and Play



Infants

Reduce the leading causes of infant death and illness.



Children and Adolescents

Help support healthy communities, child care programs, and schools so children can eat well, stay active, and avoid risky



Adults

Help adults lead healthy and active lives and increase the use of preventive services like cancer screenings.



Older Adults

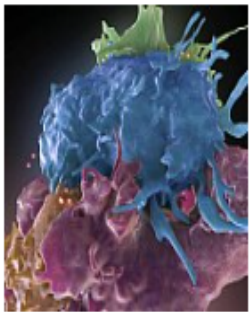
Promote quality of life and independence for people as they age.

National Institutes of Health: Two Additional Health Challenges in the US



Opioid Addiction

NIH-supported research has led to effective strategies that can be implemented right now to save lives and to prevent and treat opioid addiction.



Infectious Diseases

NIH scientists are working to better understand how microbes develop resistance to antibiotics, finding new diagnostics that can more quickly detect resistance, and finding new antibiotic drugs and vaccines to prevent and treat bacterial infections.

Mental Health

PREVENTING CHRONIC DISEASE

PUBLIC HEALTH RESEARCH, PRACTICE, AND POLICY

Volume 17, E79

AUGUST 2020

COMMENTARY

The Critical Need for a Population Health Approach: Addressing the Nation's Behavioral Health During the COVID-19 Pandemic and Beyond

Arthur C. Evans, PhD¹; Lynn F. Bufka, PhD¹

Accessible Version: www.cdc.gov/pcd/issues/2020/20_0261.htm

Suggested citation for this article: Evans AC, Bufka LF. The Critical Need for a Population Health Approach: Addressing the Nation's Behavioral Health During the COVID-19 Pandemic and Beyond. *Prev Chronic Dis* 2020;17:200261. DOI: <https://doi.org/10.5888/pcd17.200261>.

Introduction

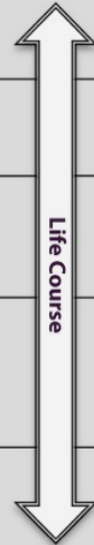
Calls to bring a population health framework to the nation's health care system have been increasing. Although this approach had been steadily gaining traction for physical health (1), using this approach with respect to behavioral health (ie, mental health and substance use conditions) has only recently been considered (2,3).

Characteristics and Attributes

- ❑ Life Stage (Age Groups)
- ❑ Race and Ethnicity
- ❑ Sex and Gender
- ❑ Geographic Location
- ❑ Community Settings
- ❑ Lesbian, Gay, Bisexual, Transgender
- ❑ Cultures
- ❑ Health Care Settings
- ❑ Socioeconomic Status
- ❑ Comorbidities

Ecological Models in Research on Health Disparities

Health Disparity Populations: Race/Ethnicity, Low SES, Rural, Sexual/Gender Minority Other Fundamental Characteristics: Sex/Gender, Disability, Geographic Region				
Domains of Influence	Levels of Influence			
	Individual	Interpersonal	Community	Societal
Biological	Biological Vulnerability and Mechanisms	Caregiver-Child Interaction Family Microbiome	Community Illness Exposure Herd Immunity	Sanitation Immunization Pathogen exposure
Behavioral	Health Behaviors Coping Strategies	Family Functioning School/Work Functioning	Community Functioning	Policies and Laws
Physical/Built Environment	Personal Environment	Household Environment School/Work Environment	Community Environment Community Resources	Societal Structure
Sociocultural Environment	Sociodemographics Limited English Cultural Identity Response to Discrimination	Social Networks Family/Peer Norms Interpersonal Discrimination	Community Norms Local Structural Discrimination	Societal Norms Societal Structural Discrimination
Health Care System	Insurance Coverage Health Literacy Treatment Preferences	Patient-Clinician Relationship Medical Decision-Making	Availability of Health Services Safety Net Services	Quality of Care Health Care Policies
Health Outcomes	Individual Health	Family/Organizational Health	Community Health	Population Health



Elizabeth Reifsnider, Martina Gallagher, Bunny Forgione, Using Ecological Models in Research on Health Disparities, Journal of Professional Nursing, Volume 21, Issue 4, 2005, Pages 216-222.

Moments of Deep Reflection in Scholarly Publishing



JAMA 
@JAMA_current

No physician is racist, so how can there be structural racism in health care? An explanation of the idea by doctors for doctors in this user-friendly podcast from the great [@DrKatzNYCHH](#) and [@ehIJAMA!](#)
ja.ma/3pG4wne



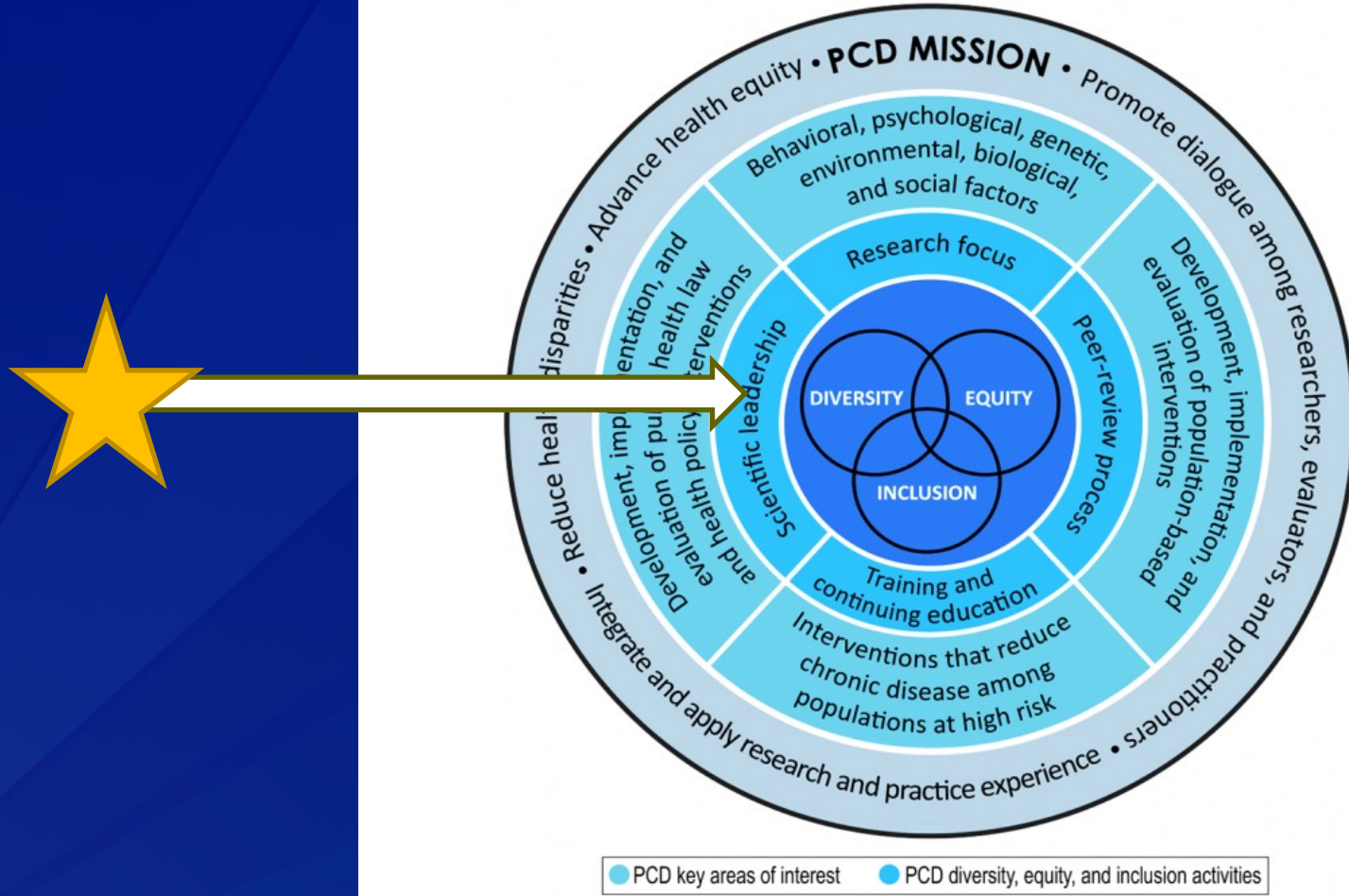
**Structural Racism for Doctors
—What Is It?**

edhub.ama-assn.org

PCD Expanding Research and Evaluation Topic Areas of Interest

Evolving/Expanded Public Health Topics (2004-2021)	Where, When, and How to Effectively Intervene To Improve Population Health	The Intersection of Racism and Health
<ul style="list-style-type: none"> • Community interventions among diverse racial and ethnic groups, SES, educational levels, and geographic locations • Understanding ways to adopt evidence-based interventions • Using maps and geospatial results to guide program and policy decision making • Public Health Response to COVID-19 & Chronic Disease • Health Policy and Systems Research • Oral Health Inequities and Access to Care • Methodological challenges in health disparities research 	<ul style="list-style-type: none"> • Potential interventions to improve health equity in diverse populations and settings • Health equity in all policies • Integrating health equity in program design, implementation, and evaluation • Examples of early studies of interventions to improve health equity • Knowledge, skills, and abilities among public health and non-public health workforce • Strategies on avoiding potential silos in the pursuit of new advances in this area • Health equity measurement and metrics challenges and opportunities 	<ul style="list-style-type: none"> • Generational effects of various forms on racism on education systems, housing practices, and mental health • Understanding of downstream causes of health disparities as a result of exposure to racism • Forms of racism and their deleterious effects on physical, mental, and emotional health • Intersectionality of structural racism and other social determinants of health • Public Health Responses to Racism • Methodological approaches to quantify racism's association with, or consequence of, physical and mental health inequities

PCD's Multicomponent Approach to Advancing Diversity, Equity, and Inclusion to Reduce Health Disparities, Advance Health Equity, and Improve Population Health



Jack L Jr. PCD's Commitment to Advancing Diversity, Equity, and Inclusion in Its Scientific Leadership, Peer-Review Process, Research Focus, Training, and Continuing Education. Prev Chronic Dis 2021;18:210269. DOI: <http://dx.doi.org/10.5888/pcd18.210269external icon>

PCD Editorial Board

Zachary Brian, DMD, MHA

Director
North Carolina Oral Health Collaborative
Cary, North Carolina



Dr Brian's clinical and administrative career in public health has focused on increasing oral health equity and access, supporting integrated practice, and facilitating collaborative partnerships to achieve systems change for vulnerable populations. As director of the North Carolina Oral Health Collaborative, Dr Brian helps shape state public policy and practice through health promotion and literacy, policy advocacy, and educational outreach highlighting the connection between oral health and overall health outcomes.

Previously, Dr Brian was site director for the Indian Health Service for the Sault Tribe of Chippewa Indians. He also served as dental director for a federally qualified health center in New Haven,

Connecticut, working in partnership with Yale University. He holds adjunct faculty appointments at the University of North Carolina at Chapel Hill Adams School of Dentistry, the University of North Carolina Gillings School of Global Public Health, and North Central Michigan College. Dr Brian received a BS from Murray State University, an MHA from the University of Louisville, and an MHA from Central Michigan University.

Appointment Term: 2020-2024

Pamela L. Carter-Nolan, PhD, MPH

Director, Master of Public Health Program
Howard University Graduate School
Washington, DC



Prior to her current position, Dr Carter-Nolan was director of public health research at IQ Solutions, Inc. a public health consultancy firm. In this role her primary responsibility was to supervise and support the National Institutes of Health Office of Disease Prevention's (NIH-ODP's) prevention research taxonomy project. From 2010 to 2015, Dr Carter-Nolan served as assistant dean of medical education and vice chair of the Community and Family Medicine Department at the Howard University College of Medicine. She is an investigator and educator who has designed, implemented, and led several training programs, curricula, and courses focused on clinical translational science and health disparities-related topics. She has also led efforts in curriculum and course development and planning of public health programs and medical education. Dr Carter-Nolan is the co-director for the faculty development component of the Research Centers in Minority Institutions (RCMI) at Howard University and the co-director for the Cancer Research Education Program for the Howard-Georgetown Collaborative Partnership in Cancer Research, which are both NIH-funded initiatives. Dr Carter-Nolan received a BS in community health education from the University of Massachusetts, an MPH in health policy from Yale University, and a PhD in epidemiology from the University of Pittsburgh.

Appointment Term: 2020-2023

Sunita Dodani, MBBS, PhD, MSc

Professor of Medicine
Eastern Virginia Medical School (EVMS)
Founding Director
EVMS-Sentara Healthcare Analytics and Delivery Science Institute (HADSI)
Norfolk, Virginia



Dr Dodani has served as an executive leader for more than 20 years with vast experience in research management and creating innovative models of health promotion. In her current position, she is dedicated to improving the quality of health care in Hampton Roads, Virginia, and striving to improve population health, reduce disparities, and create high-performing, sustainable health systems through the use of health care analytics tools. Dr Dodani is an NIH-funded outcome implementation scientist and has developed several cardiovascular disease prevention programs for diverse races and ethnic communities. In 2020, soon after the COVID-19 pandemic began, she established the Health Equity Collaborative, in which 12 academic institutions and 5 major health care systems participate in Virginia. The collaborative brought organizations together on 1 platform to reduce and eliminate health disparities in the region through partnerships and team science. Dr Dodani is nationally and internationally known for her mentoring skills and has helped to develop more than 70 physician-scientists.

Appointment Term: 2022-2026

Sheba M. George, PhD

Associate Professor, Department of Preventive and Social Medicine
Program Director, Health Careers Opportunity Program
Community Health Worker Academy
Charles R. Drew University of Medicine and Science
Adjunct Professor, Department of Community Health Sciences
University of California at Los Angeles, Fielding School of Public Health
Los Angeles, California



Dr Sheba George is an associate professor in the Department of Preventive and Social Medicine, at Charles R Drew University in Los Angeles, California, and an adjunct professor in the Department of Community Health Sciences at the University of California at Los Angeles, Fielding School of Public Health. Dr George has extensive expertise in implementing social-scientific theories and qualitative, quantitative, and community-engaged methods of studying health inequities among racial and ethnic under-resourced populations. Her areas of focus have included the digital divide and its impact on meaningful use of health information technology, research participation among under-resourced groups, and a cultural framework for health. Her recent work has concentrated on health professional training with community health workers in under-resourced clinical settings.

Appointment Term: 2022-2026

Paulette Grey Riveria, MD, MPH, MBA

Regional Administrator / Regional Medical Director
Louisiana Department of Health, Office of Public Health, Region 2
Primary Care Practitioner
Baton Rouge, Louisiana



Dr Paulette Grey Riveria is a family medicine physician and public health leader with global experience. Through her private consulting firm, she provides primary care and public health consulting to community groups, businesses, and governments. Additionally, she currently serves as a Regional Medical Director within the Louisiana Department of Health, overseeing public health programs across 7 parishes in Louisiana. Her primary care and public health work focuses on health literacy, disease prevention, and health care justice. She received her medical degree from Johns Hopkins University School of Medicine, a master's degree in public health from Harvard School of Public Health, and an MBA from the University of Illinois at Chicago.

Appointment Term: 2022-2026

Jeffrey E. Hall, PhD, MA, MSPH, CPH

Deputy Director, Office of Minority Health and Health Equity and Chief of the Minority Health and Health Equity Team
Office of Minority Health & Health Equity
Centers for Disease Control & Prevention
Atlanta, Georgia



Dr Hall serves as deputy director of the Office of Minority Health and Health Equity (OMHHE) and chief of the Minority Health and Health Equity team for the Centers for Disease Control and Prevention (CDC) with key involvement in substantive health matters and in health policy and program development. Dr Hall works to assure that the OMHHE helps to accelerate CDC's health impact in improving population health and eliminating health disparities in the US. He provides leadership across several OMHHE priorities, including strategic planning, technical consultation and assistance, refining OMHHE's health equity framework and grounding concepts and principles, elaborating workforce diversity as a social determinant of health, and measuring and monitoring progress toward health equity. Prior to joining OMHHE, Dr Hall was lead behavioral scientist in the Surveillance Branch of the Division of Violence Prevention in CDC's National Center for Injury Prevention and Control. Dr Hall has a PhD in medical sociology, an MSPH in epidemiology, and an MA in sociology from the University of Alabama at Birmingham (UAB). Dr Hall is currently an adjunct faculty member in UAB's Department of Sociology.

Appointment Term: 2020-2023

PCD Associate Editors

Arsham Alamian, PhD, MSc, FACE

Associate Dean for Health Studies
Associate Professor
University of Miami
School of Nursing and Health Studies
Coral Gables, Florida



Dr Alamian is associate dean for health studies and an associate professor at University of Miami School of Nursing and Health Studies (SONHS). As associate dean, Dr Alamian oversees the public health and health sciences programs of the SONHS. His research interests include cluster-risk and theoretical modeling of risk behaviors and risk factors for chronic disease including metabolic syndrome, diabetes, and cardiovascular disease. He has been investigator on multiple National Institutes of Health and state grants on pediatric obesity, metabolic syndrome, and biomarkers for chronic liver disease. Dr Alamian received a doctoral degree in public health, with specialization in epidemiology, from the University of Montreal School of Public Health. He completed a fellowship in public health through a Canadian Institutes of Health Research fellowship program at McGill University, and has a master of science degree in pharmacy, with specialization in pharmacoepidemiology, from Laval University.

Appointment Term: 2019-2023

Semra Aytur, PhD, MPH

Associate Professor
Department of Health Management and Policy
University of New Hampshire
Durham, New Hampshire



Dr Aytur is an epidemiologist whose research focuses on relationships between health behavior, chronic disease prevention, and environmental, social, and policy factors. Prior to joining the University of New Hampshire, Dr Aytur completed a PhD and postdoctoral fellowship in cardiovascular epidemiology at the University of North Carolina, Chapel Hill, and an MPH at Boston University. She is particularly interested in health disparities and in relationships between population health and access to health-promoting resources. Her methodological focus areas include generalized linear mixed models, mediation analysis, complex systems models, health impact assessment, and participatory action research methods such as photovoice and community mapping.

Appointment Term: 2019-2023

Ronny A. Bell, PhD, MS

Fred Eshelman Professor and Chair
Division of Pharmaceutical Outcomes and Policy
Eshelman School of Pharmacy
University of North Carolina at Chapel Hill
Chapel Hill, North Carolina



Dr Bell is the Fred Eshelman Professor and Chair of the Division of Pharmaceutical Outcomes and Policy at the Eshelman School of Pharmacy at the University of North Carolina at Chapel Hill. He is an enrolled member of the Lumbee tribe of eastern North Carolina, and he currently serves as Chair of the North Carolina American Indian Health Board. Dr Bell is also a member of the North Carolina Advisory Committee on Cancer Coordination and Control (NC ACCCC) and co-chairs the NC ACCCC Prevention Subcommittee. He co-leads the Southeastern American Indian Cancer Health Equity Partnership (SAICEP), a collaboration between the Community Outreach and Engagement programs at the 3 NCI-designated Comprehensive Cancer Centers in North Carolina. In 2019, he was appointed as Scientific Co-Editor for the North Carolina Medical Journal. Dr Bell received his undergraduate degree in Public Health Nutrition from the University of North Carolina at Chapel Hill School of Public Health (1985) and his master's (1988) and doctorate (1993) in Foods and Nutrition from the University of North Carolina at Greensboro. Dr Bell completed a postdoctoral fellowship in Gerontology and a master's in Epidemiology (1996) from the Wake Forest School of Medicine.

Appointment Term: 2020-2025

Erin Bouldin, PhD, MPH

Assistant Professor
Department of Internal Medicine
School of Medicine
University of Utah
Salt Lake City, Utah



Dr Bouldin is an Assistant Professor in the Division of Epidemiology at the University of Utah's School of Medicine, Department of Internal Medicine. Her research focuses on disability, healthy aging, and caregiving, with an emphasis on cognitive decline and people living in rural areas. She received an MPH in Epidemiology from the University of Florida and a PhD in Epidemiology from the University of Washington. She completed a post-doctoral fellowship with the VA Center of Innovation for Veteran-Centered and Value-Driven Care in Seattle.

Appointment Term: 2019-2023

Tammy Calise, DrPH, MEd

Director, John Snow, Inc. Healthy Communities
Boston, Massachusetts



Dr Calise is the director of John Snow, Inc. Healthy Communities and is responsible for advancing the organization's commitment to place-based efforts where communities flourish and people thrive. Her interests include the contributions of evidence-based programs, policies, and systems changes to health status, particularly in chronic disease. Dr Calise has a background in developmental evaluation, social determinants of health, public policy, needs assessments, and training and technical assistance. She works in health care, public health, and community-based organizations to transform places to support health. As lead evaluator on a number of state-level chronic disease efforts, Dr Calise has worked to ensure partners from across geographic areas and organizational boundaries have opportunities to collect and compile data, share information, leverage resources, and document and enhance their collective impact. Dr Calise received a DrPH in social and behavioral sciences from Boston University and an MEd from the University of Missouri.

Appointment Term: 2019-2025

Pyone Cho, MD, MPH

Epidemiologist
Division of Diabetes Translation
National Center for Chronic Disease Prevention and Health Promotion
Centers for Disease Control and Prevention
Atlanta, Georgia



Dr Cho is an epidemiologist in the Division of Diabetes Translation at the Centers for Disease Control and Prevention (CDC). He started his public health career as a medical epidemiologist and team leader with a national vector-borne diseases control program at the Ministry of Health, Burma. Then he served as a medical officer at a mining corporation hospital. After receiving two master's degrees at San Jose State University, California, he continued his career in two California counties, working as an epidemiologist and public health data manager. Before coming to CDC, Dr Cho was an epidemiologist at the Georgia Department of Public Health, where his work focused on the prevention and control of diabetes, kidney disease, and vision health.

Appointment Term: 2019-2023

PCD Statistics Review Committee

Veronica Berrocal, PhD, MsC

Department of Statistics
University of Washington
Seattle, Washington



Dr Berrocal received a PhD in statistics from the University of Washington and an MsC in statistics from Michigan State University. Dr Berrocal's research is focused on developing and applying statistical methods to analyze data collected over space and time (eg, spatio-temporal data, geostatistical data), with a particular emphasis on characterizing environmental exposure and its effect on health, the role of environmental factors, spatial movement and human behavior in the spread and transmission of infectious diseases, and antibiotic resistance. Dr Berrocal has also contributed to the clinical literature on rheumatology through her participation in multiple clinical trials for the management of systemic sclerosis as well as her involvement in the development of a composite response index for systemic sclerosis. Dr Berrocal is a 2022 Fellow of the American Statistical Association and since 2021, a member of the Federal Insecticide, Fungicide, Rodenticide Act Scientific Advisory Panel of the US Environmental Protection Agency.

Appointment Term: 2020-2025

B. Rey de Castro, ScD

Mathematical Statistician
Quantitative Sciences & Data Management Branch
Division of Tuberculosis Elimination
National Center for HIV/AIDS, Viral Hepatitis, STD, & TB Prevention
Centers for Disease Control & Prevention
Atlanta, Georgia



Dr de Castro is a mathematical statistician examining the efficacy of tuberculosis testing and clinical treatment. His broad expertise encompasses HIV/AIDS treatment, environmental epidemiology, and human exposure to environmental pollutants. Dr de Castro also serves on CDC's Statistical Advisory Group and is the founder and chair of the newly reincarnated CDC SAS Users Group. During November 2014-January 2015, Dr de Castro was deployed to Sierra Leone as part of CDC's West Africa Ebola response. Dr de Castro has a doctor of science degree in environmental health.

Appointment Term: 2019-2023

Jenine K. Harris, PhD

Associate Professor
George Warren Brown School of Social Work
Washington University in St Louis
St Louis, Missouri



Dr Harris teaches biostatistics in the public health program at Washington University in St Louis. Her research interests focus on improving the quality of research in public health by using reproducible research practices throughout the research process. She received a doctoral degree in public health studies with a concentration in biostatistics from the Saint Louis University School of Public Health.

Appointment Term: 2019-2023

Tyler C. Smith, PhD

Chair and Professor
Department of Community Health
School of Health and Human Services
National University
San Diego, California



Dr Smith is a statistical epidemiologist and professor in the Department of Community Health at National University. He conducts longitudinal studies and research focusing on military and veteran health. He has authored nearly 150 peer-reviewed journal publications and 300 presentations. He has a master's degree in statistics from the University of Kentucky and a doctoral degree in epidemiology from the University of California, San Diego.

Appointment Term: 2019-2023

Carmen D. Tekwe, PhD

Associate Professor of Biostatistics
Department of Epidemiology and Biostatistics
School of Public Health
Indiana University - Bloomington
Bloomington, Indiana



Dr Tekwe has more than 15 years of experience in collaborating and conducting research in biostatistics with applications to substantive research areas such as aging, chronic diseases, radiation effects, cancer, nutrition, physical activity, and obesity. Her research interests include structural equation models, measurement errors, statistical proteomics, radiation effects, and statistical methods for nutrition, physical activity, and obesity. She received a doctoral degree in biostatistics from the University at Buffalo and a master's degree in statistics from the University of Florida.

Appointment Term: 2020-2024

Machell Town, PhD

Branch Chief
Population Health Surveillance Branch
Division of Population Health
National Center for Chronic Disease Prevention and Health Promotion
Centers for Disease Control and Prevention
Atlanta, Georgia



Dr Town serves as the branch chief for the Population Health Surveillance Branch in the Division of Population Health in the National Center for Chronic Disease Prevention and Health Promotion at the Centers for Disease Control and Prevention (CDC). She has expertise in the oversampling of special populations and local communities for the administration of CDC's Behavioral Risk Factor Surveillance System surveys. She has a master's degree in statistics from the University of Georgia and a doctoral degree in epidemiology from Walden University.

We Need All Disciplines!

- ❑ Psychology
- ❑ Social Work
- ❑ Public Administration
- ❑ Anthropology
- ❑ Medical Sociology
- ❑ Health Economics
- ❑ Statistics/Biostatistics
- ❑ Health Care Administration
- ❑ Business/Business Administration
- ❑ Public Health: Behavioral Sciences, Community Health, Health Education/Promotion, Health Systems, Maternal/Child Health, Global/International Health, Nutrition, Statistics & Biostatistics

PCD's Multicomponent Approach to Advancing Diversity, Equity, and Inclusion to Reduce Health Disparities, Advance Health Equity, and Improve Population Health



● PCD key areas of interest ● PCD diversity, equity, and inclusion activities



Jack L Jr. PCD's Commitment to Advancing Diversity, Equity, and Inclusion in Its Scientific Leadership, Peer-Review Process, Research Focus, Training, and Continuing Education. Prev Chronic Dis 2021;18:210269. DOI: <http://dx.doi.org/10.5888/pcd18.210269external icon>

PCD Types of Articles

- ❑ **Original Research: 3500 words, 30 references, 3 tables, 2 figures**
- ❑ **Research Brief: 1200 words, 12 references, 3 tables, 3 figures, or a combination of 3 items**
- ❑ **Systematic Review: 3500 words, no limit on references, 3 tables, 2 figures**
- ❑ **Implementation Evaluation: 4500 words, 40 references, 5 tables, 4 figures**
- ❑ **Program Evaluation Brief: 2000 words, 15 references, 2 tables, 2 figures (or 1 of each)**

PCD Types of Articles (cont.)

- ❑ **GIS Snapshots:** explanatory text 1000 words, 15 references, map
- ❑ **Tools for Public Health Practice:** 3000 words, 40 references, 3 tables, 2 figures
- ❑ **Essay:** 1500 words, 10 references, 1 figure or 1 table
- ❑ **Letter:** 600 words, 6 references, 2 tables or 2 figures (or 1 of each)

PCD Author and Reviewer Resources

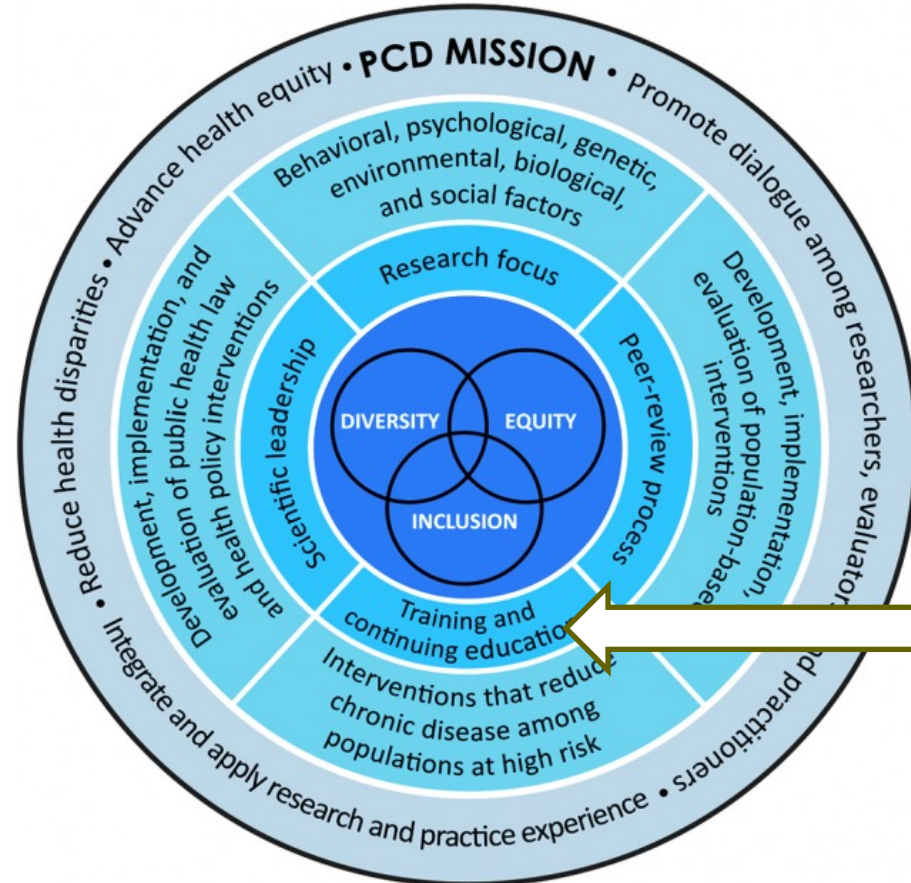
- **Effort to Level the Playing Field**
- **Diversifying Pools of Opportunities**
- **General Information**
- **Types of Articles: Best Practices**
- **How to Submit An Inquiry**
- **Top 10 Manuscript Problems**
- **Manuscript Checklists**

Program Evaluation Brief Article Type (Manuscript Checklist)

Purpose and Objectives

- Factors considered in developing the intervention are reported.
- Components of the intervention are adequately described.
- Specific objectives or evaluation questions are reported.
- Details on how partners and interested parties were engaged to develop the program's purpose and objectives are reported.
- Characteristics of the setting and population are described.

PCD's Multicomponent Approach to Advancing Diversity, Equity, and Inclusion to Reduce Health Disparities, Advance Health Equity, and Improve Population Health



● PCD key areas of interest ● PCD diversity, equity, and inclusion activities

Jack L Jr. PCD's Commitment to Advancing Diversity, Equity, and Inclusion in Its Scientific Leadership, Peer-Review Process, Research Focus, Training, and Continuing Education. *Prev Chronic Dis* 2021;18:210269. DOI: <http://dx.doi.org/10.5888/pcd18.210269external icon>

Conditions to Support DEI

1. Organizational commitment: Not merely unit, journal, but the entire organization!
2. Fair treatment: Employees at my organization who help the organization achieve its strategic objectives are rewarded and recognized fairly.
3. Integrating differences: Employees at my organization respect and value each other's opinions.
4. Decision making: Members of my team fairly consider ideas and suggestions offered by other team members.
5. Psychological safety: Staff and volunteers feel welcome to express their true feelings at work.
6. Trust: Communication we receive from staff and volunteers is honest and open.
7. Belonging: People in my organization care about one another.
8. Diversity perspective: Shaping direction, content, decision making, and reward from/through diversified voices, talents, experiences, and geographical locations

[See: How to Measure Inclusion in the Workplace. Harvard Business Review \(hbr.org\)](https://hbr.org)

PCD Associate Editor Roles and Responsibility

Duties

- ❑ Complete orientation
- ❑ Attend monthly meetings by Zoom
- ❑ Participate in trainings
- ❑ Evaluate manuscripts and make recommendations
 - PCD author checklists
 - Expanding research questions, methods, designs, and implications
 - Inclusive language
 - Implicit bias

Production Process After Acceptance



Inclusive Language Editing at PCD

Editing Resources

- ❑ [AMA's updated section on inclusive language](#)
- ❑ [CDC's Health Equity Guiding Principles for Inclusive Communication](#)

Ongoing Training/Review

- ❑ **Ex: CDC's Workforce Awareness: Diversity and Inclusion, Unconscious Bias, and Microaggressions**
- ❑ [JAMA Editorial on Updated Guidance on the Reporting of Race and Ethnicity from Annette Flanagin, RN; Tracy Frey; Stacy L. Christiansen; et al](#)

Praise From Authors

“Thank you for the careful editing and good work on our manuscript.”

-Gertraud Maskarinec, MD, PhD, University of Hawaii Cancer Center

“Thanks so much, Camille. I've enjoyed working with you . . . it's been such a smooth process.”

-Bryant Webber, MD, MPH, FACPM, Lt Col, US Air Force, Department of Preventive Medicine and Biostatistics

“You've been great to work with and I and my coauthors are very appreciative of your help getting this manuscript across the finish line.”

-Gregory Dwyer, MPH, George Washington University School of Public Health

PCD's Commitment to DEI

- ❑ PCD DEI Position Statement
- ❑ Article Types/Health Equity Considerations
- ❑ Collecting Optional Self-Reported Demographic Data
- ❑ 10 Ways to Improve Inclusive Language in Scholarly Communications
- ❑ DEI Statement by Authors
- ❑ Other Resources
- ❑ PCD Editor in Chief Columns

PCD Editor in Chief Columns

PREVENTING CHRONIC DISEASE

PUBLIC HEALTH RESEARCH, PRACTICE, AND POLICY

Volume 19, E17

MARCH 2023

PREVENTING CHRONIC DISEASE

PUBLIC HEALTH RESEARCH, PRACTICE, AND POLICY

Volume 19, E46

JULY 2022

EDITOR IN CHIEF'S COLUMN

New for PCD in 2022: Increased Impact Factor, Expanded Expertise, First Guest Editorial Board, and Progress in Diversity, Equity, and Inclusion Goals

Leonard Jack Jr, PhD, MSc¹

Accessible Version: www.cdc.gov/pcd/issues/2022/22_0197.htm

Suggested citation for this article: Jack L Jr. New for PCD in 2022: Increased Impact Factor, Expanded Expertise, First Guest Editorial Board, and Progress in Diversity, Equity, and Inclusion Goals. *Prev Chronic Dis* 2022;19:220197. DOI: <https://doi.org/10.5888/pcd19.220197>.

NON-PEER REVIEWED

This has been an extremely productive year for *Preventing Chronic Disease* (PCD). At the midpoint of 2022 we already have many achievements to recognize and celebrate. Last year we

and a new collection podcast, as well as our upcoming calls for papers. And finally, I will provide an update on our efforts to advance best practices in diversity, equity, and inclusion (DEI) in our operations and our plans to provide authors with updated guidance on reporting race and ethnicity.

New Editorial Board, Associate Editors, and Statistics Review Committee Appointees and PCD's First Ever Guest Editorial Board

In 2022 so far, PCD has appointed 5 new members to serve on the

REPUBLICATION

Complete Republication: Recent Updates to CSE Recommendations for Promoting Integrity in Scientific Journal Publications: Ways to Integrate Diversity, Equity, and Inclusion Into Scholarly Publishing

Leonard Jack Jr, PhD, MSc¹

www.cdc.gov/pcd/issues/2023/23_0051.htm

for this article: Jack L Jr. Complete Updates to CSE Recommendations for Scientific Journal Publications: 7 Ways to Integrate Diversity, Equity, and Inclusion Into Scholarly Publishing. *Prev Chronic Dis* 2023;20:230051. DOI: <https://doi.org/10.5888/pcd20.230051>.

Publications: <https://www.councilscienceeditors.org/recommendations-for-promoting-integrity-in-scientific-journal-publications->

Introduction

The role of both intentional and unintentional bias in society, including in scientific publishing, is receiving increased attention and discussion.^{1,2} Content assessed for publication in scientific

PCD's Multicomponent Approach to Advancing Diversity, Equity, and Inclusion to Reduce Health Disparities, Advance Health Equity, and Improve Population Health



● PCD key areas of interest ● PCD diversity, equity, and inclusion activities

Jack L Jr. PCD's Commitment to Advancing Diversity, Equity, and Inclusion in Its Scientific Leadership, Peer-Review Process, Research Focus, Training, and Continuing Education. Prev Chronic Dis 2021;18:210269. DOI: <http://dx.doi.org/10.5888/pcd18.210269>

PCD DEI Lens: Collection Covers

PREVENTING CHRONIC DISEASE
PUBLIC HEALTH RESEARCH, PRACTICE, AND POLICY



Global Responses to
Prevent, Manage, and
Control Cardiovascular
Disease



PREVENTING CHRONIC DISEASE
PUBLIC HEALTH RESEARCH, PRACTICE, AND POLICY



Health Equity in Action: Research,
Evaluation, Policy, and Practice



PREVENTING CHRONIC DISEASE
PUBLIC HEALTH RESEARCH, PRACTICE, AND POLICY


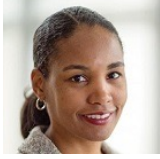









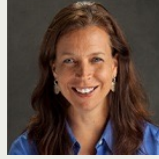


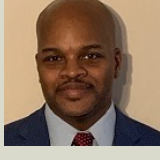

**RACISM IS A PUBLIC
HEALTH CRISIS**

Combating Racism Through Research,
Training, Practice, and Public Health Policies



PCD DEI Lens Across Collections: Combating Racism

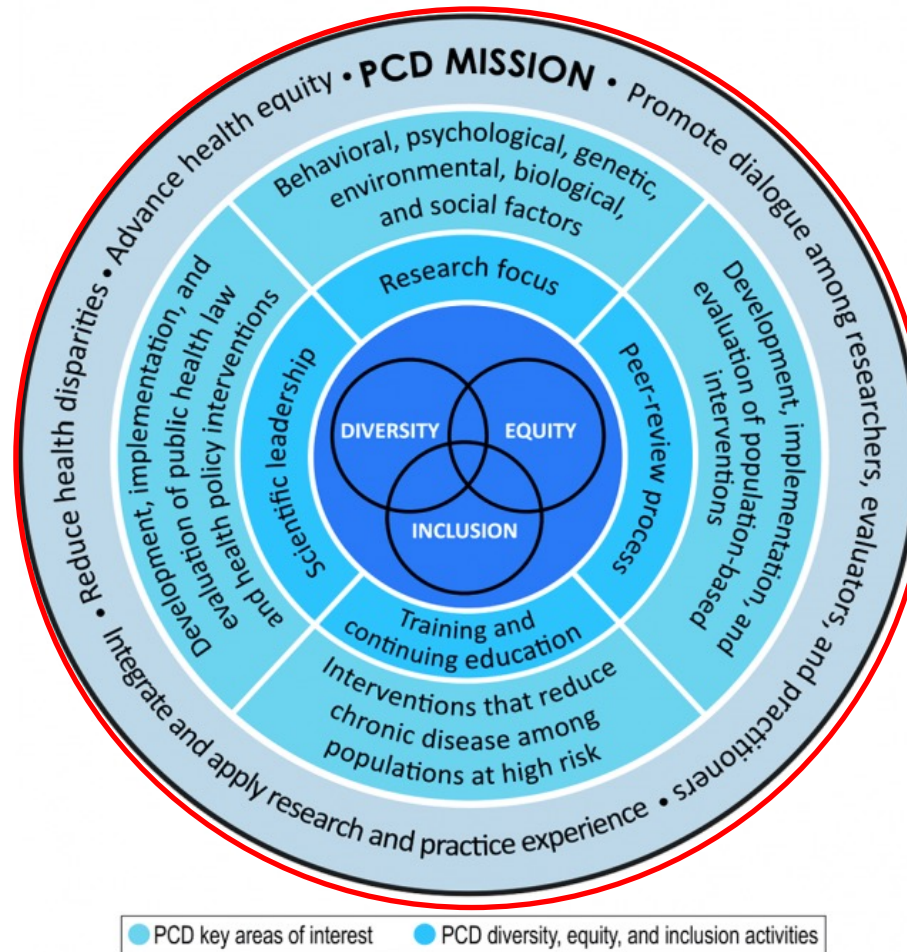
Collection Guest Editorial Board Members (Example)

 <p>Sergio Aguilar-Gaxiola, MD, PhD</p>	 <p>L. Ebony Boulware, MD, MPH</p>	 <p>Sheba M. George, PhD</p>	 <p>Judith Lee Smith, PhD</p>
 <p>Tabia Henry Akintobi, PhD, MPH</p>	 <p>David Chae, ScD, MA</p>	 <p>Latha Palaniappan, MD, MS</p>	 <p>Evelyn Twentyman, MD, MPH</p>
 <p>Philip M. Alberti, PhD</p>	 <p>Fátima Coronado, MD, MPH</p>	 <p>Austin Porter III, DrPH, MPH</p>	 <p>Karina Walters, PhD, MSW</p>
 <p>Brian Armour, PhD</p>	 <p>Shanna N. Cox, MSPH</p>	 <p>Michael L. Sells, PhD, MS, CHES</p>	 <p>Donald Warne, MD, MPH</p>

PCD DEI Lens: Building Pipeline of Researchers, Communication, and Editorial Leadership

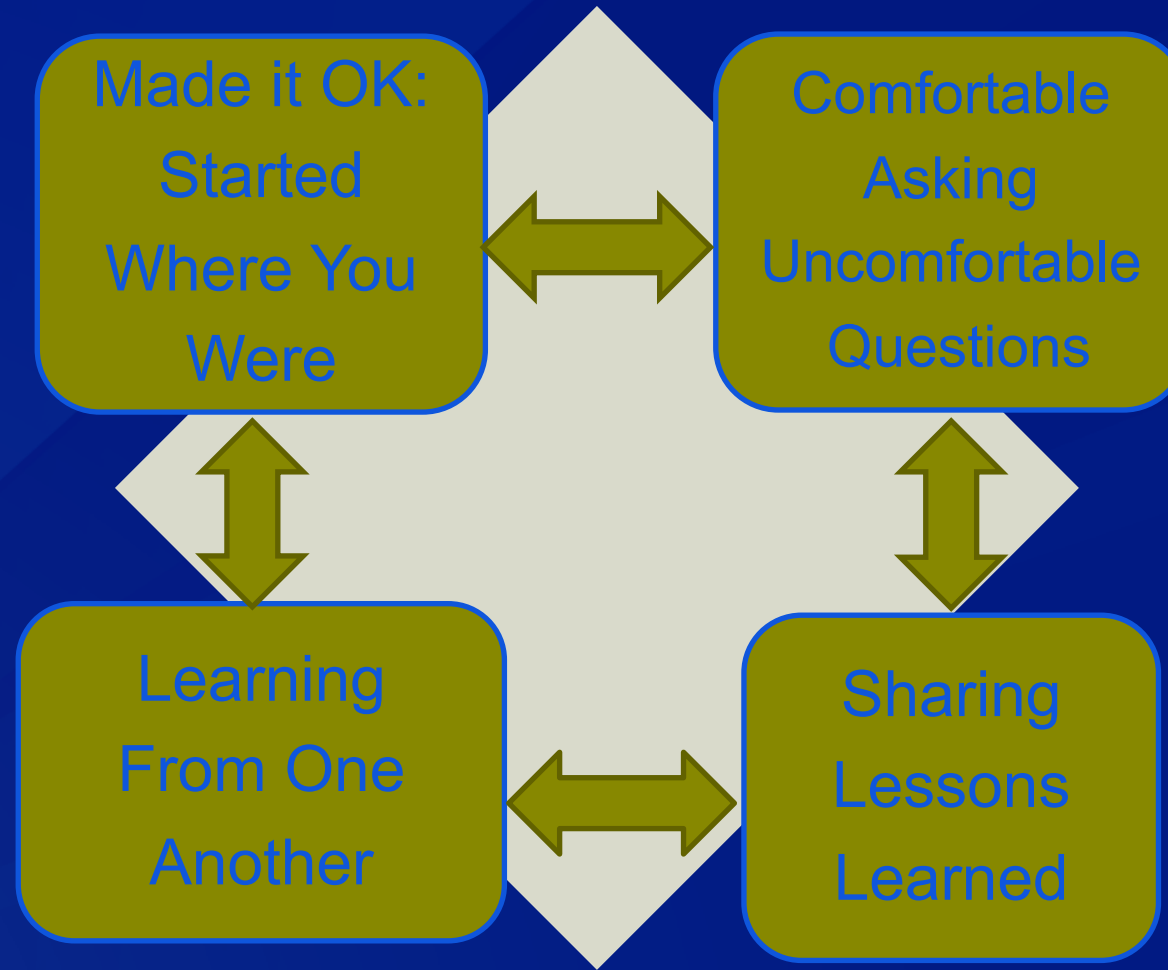
- ❑ Inaugural Student Scientific Writing and Review Training Committee**
- ❑ 15+ Members**
- ❑ Training: Scientific Writing, Reviewing Papers, Shadowing AEs, Journal Operations 101**
- ❑ Guest Presenters**
- ❑ Advisory Board to PCD EIC**
- ❑ Certificate of Completion**

PCD's Multicomponent Approach to Advancing Diversity, Equity, and Inclusion to Reduce Health Disparities, Advance Health Equity, and Improve Population Health



Jack L Jr. PCD's Commitment to Advancing Diversity, Equity, and Inclusion in Its Scientific Leadership, Peer-Review Process, Research Focus, Training, and Continuing Education. *Prev Chronic Dis* 2021;18:210269. DOI: <http://dx.doi.org/10.5888/pcd18.210269>external icon

Keys To Success



Collective Impact Helps To Increase PCD's Impact

PCD Journal Impact Factor Increases

2022

5.5

2021

4.354

2020

2.803



U.S. Department of
Health and Human Services
Centers for Disease
Control and Prevention

cdc.gov/pcd

PCD
PREVENTING
CHRONIC DISEASE

In Closing...



“We all should know that diversity makes for a rich tapestry, and we must understand that all the threads of the tapestry are equal in value no matter what their color.”

–Maya Angelou

PREVENTING CHRONIC DISEASE

PUBLIC HEALTH RESEARCH, PRACTICE, AND POLICY

Questions & Answers